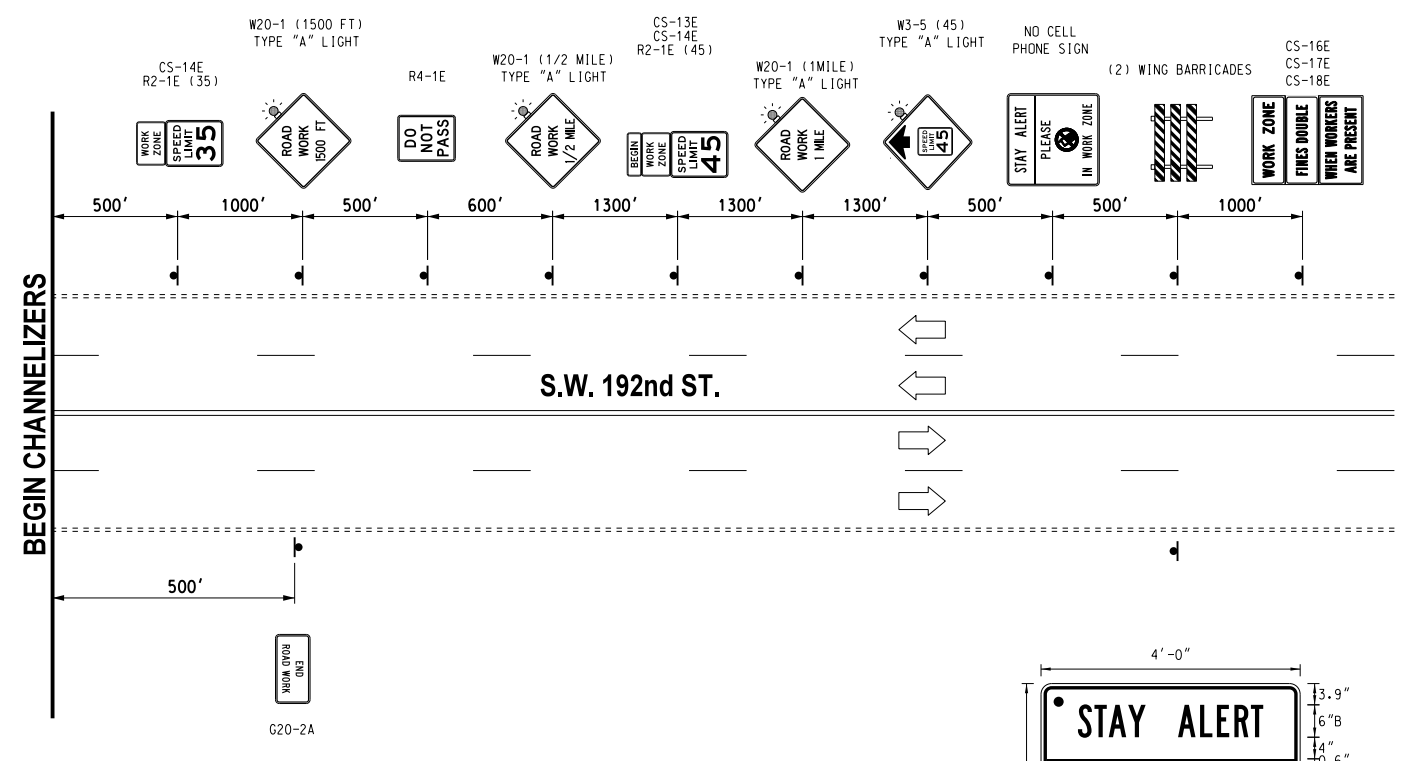
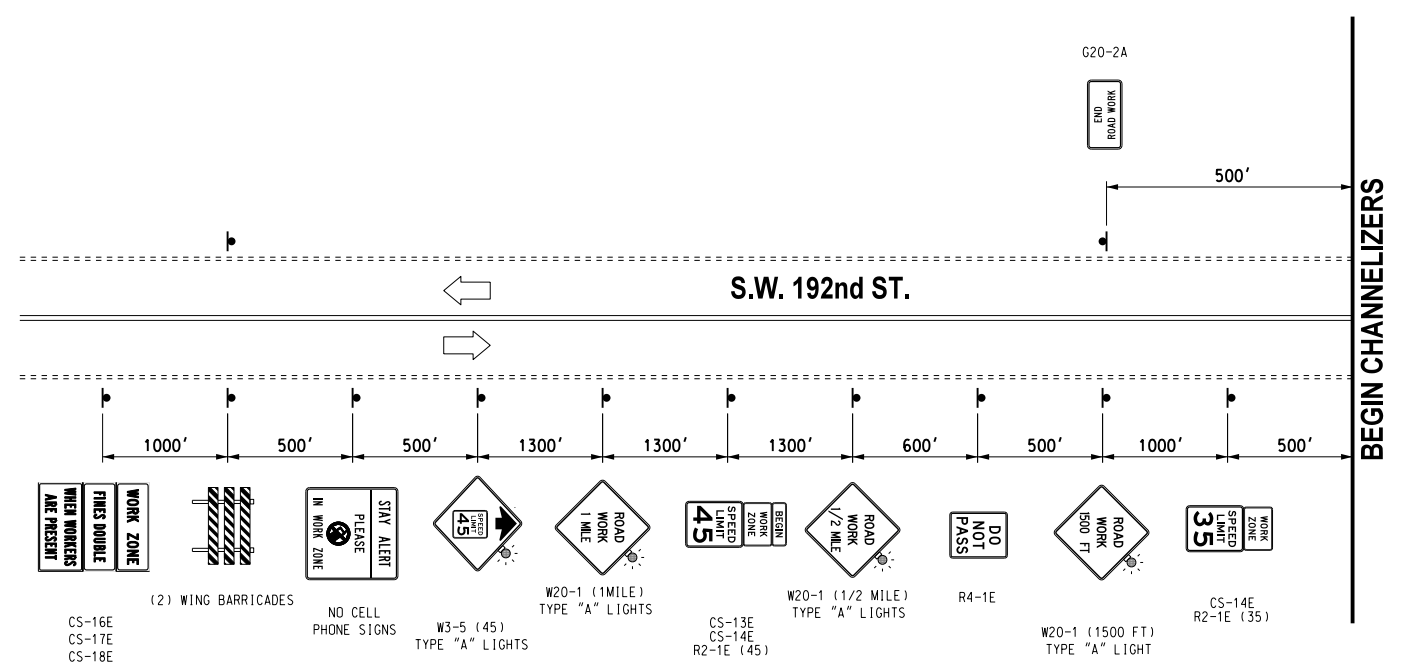
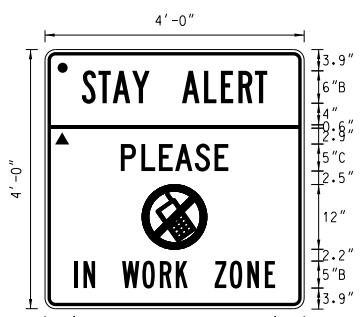


REVISIONS		
NO.	DESCRIPTION	DATE

08/10/17 G:\0\Projects\T-1662B SH 74 @ NW 178th, NW 192nd & NW 206th\CAD\TC ADVANCE SIGNING 2 LANE SW 192ND.DGN



**CONTRACTOR SHALL KEEP  
11' MINIMUM LANES UNLESS  
OTHERWISE NOTED.**



BORDER  
R=1.5"  
TH=0.63"  
IN=0.47"

**NO CELL PHONE SIGN**

48"x48"

- LEGEND, SYMBOL & BORDER - BLACK NON-REFLECTIVE  
BACKGROUND - YELLOW REFELCTIVE
- ▲ LEGEND, SYMBOL & BORDER - BLACK NON-REFLECTIVE  
BACKGROUND - ORANGE REFLECTIVE

DRAWING NOT TO SCALE

Design	RWR	08/10/17
Drawn	SB	08/10/17



**TYPICAL ADVANCE WARNING SIGNS  
N.W. 192nd ST.**

State Job No. 14964(08) Sheet No. T32